

MD 9000 Pharma

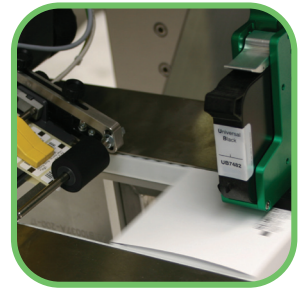


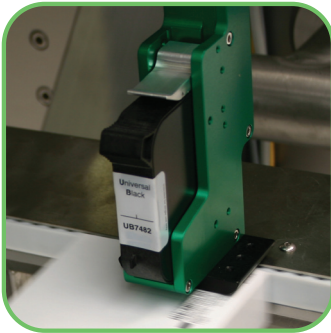
Datamatrix marking and serialisation at high-speed production lines

The MD 9000 Pharma is a system for Datamatrix marking and control and serialisation that is fully compliant with the requirements of the pharmaceutical industry. With its flexible design, the machine fits into new as well as existing production lines. Its modularity enables to introduce complementary hardware modules such as top and bottom conveyors, side belt product return units or in feed centering conveyors, to ensure efficient marking and control in the most demanding environments.

FEATURES:

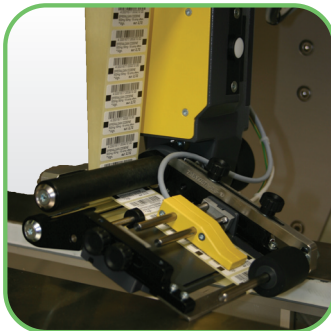
- Datamatrix marking, control and storage at high speed production lines
- Serialisation-ready
- Own product, in-house designed and assembled in line with your requirements
- Using industry standard components (HP, Wolke, Cognex, ...)
- Various set-ups available: print & verification unit (top or side positioning), labeling unit for vignette labeling, safety seal labeling for tamper evident packaging, etc.





Cabinet:

- Balcony style
- Full stainless steel frame with adjustable feet for height positioning
- Integrated aluminum base plate, hand wheel operated to cope with different pack dimensions. For ease of operation, all peripheral equipment is positioned onto this plate reducing downtime in product shift.



Standard features:

- Encoder for high quality printing and labeling and easy adjustment of all components (accuracy 1/10 mm)
- Industrial LCD screen (built in swivel cabinet or integrated into steel cabinet)
- Industrial PC and inkjet module
- Siemens PLC (other options possible)
- All conveyors individually equipped with stepper motors
- Minimum adjustments of fixed photocells and side belts via hand wheel, adjusted from center, left or right



Options:

- **Conveyors:**
 - Side belt in feed conveyors for product alignment
 - Top- and bottom conveyors for tamper evident labeling, or side Print & Verification
 - Side belt out feed conveyors for product reject station
- **Reject station:** electrically or pneumatically driven, partially covered, with safety switch and reject collection box
- **Printer:** HP technology, inkjet printers of leading providers
- **Camera:** of leading providers
- **Labelling head**
 - Vignette labeling head (up to 50m/min)
 - Safety seal tamper evident labeling heads



Technical specifications:

- **Carton range:**
 - Length: min 30mm - max 150mm
 - Height: min 20mm - max 115mm
 - Width: min 40mm - max 185mm
- **Product speed:** up to 380 products/min
- **Footprint dimensions:**
 - L x W x H: 970 x 600 x 1800mm
 - Weight: 350kg
- **Power:** 380V to 400 VAC - 3 phase